

FDC 77



PROGRAMME DRONE

ECO-CONTRIBUTION





ENSILAGE POUR METHANISATION



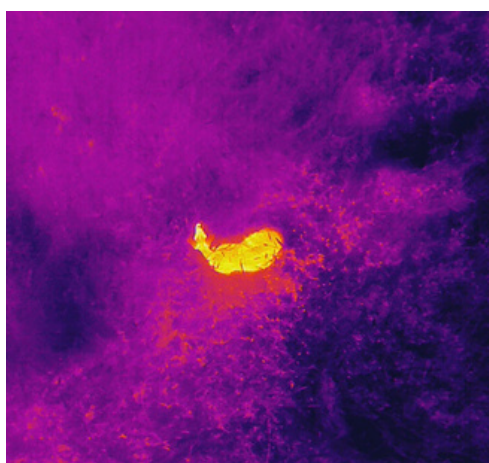
FAUCHE LUZERNE BIO





2 TELEPILOTES

Formation DGAC



26 HEURES DE VOL

2 drones thermiques



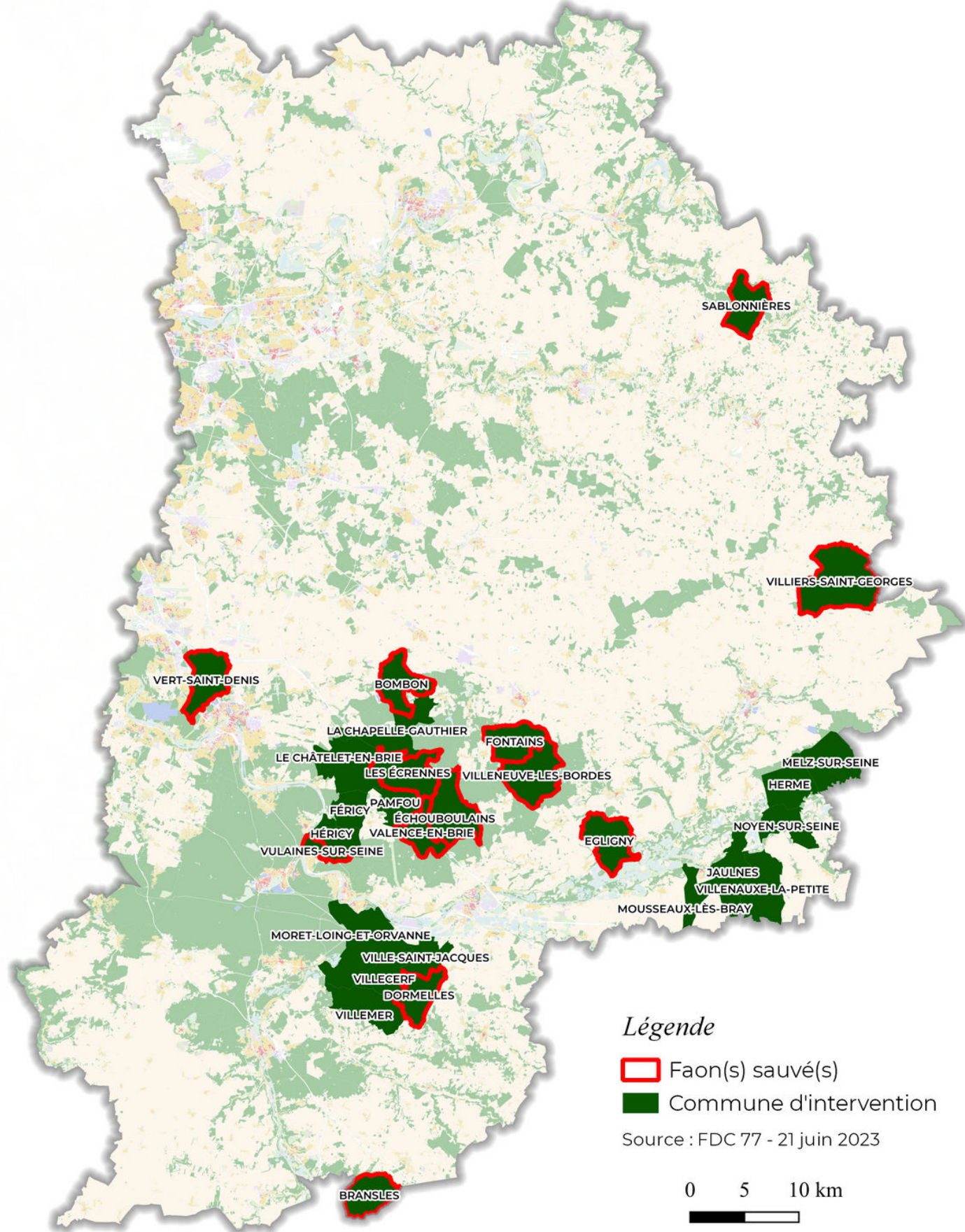
690 HA SURVOLÉS

508 ha prairies de fauche / Luzerne

182 ha méthanisation

A photograph of a deer in a forest, partially obscured by a semi-transparent green overlay with text. The deer is standing in a field of tall grass and is looking towards the camera. The background shows a dense forest with many trees.

23 FAONS
SAUVÉS
EN 1 AN



DRONE

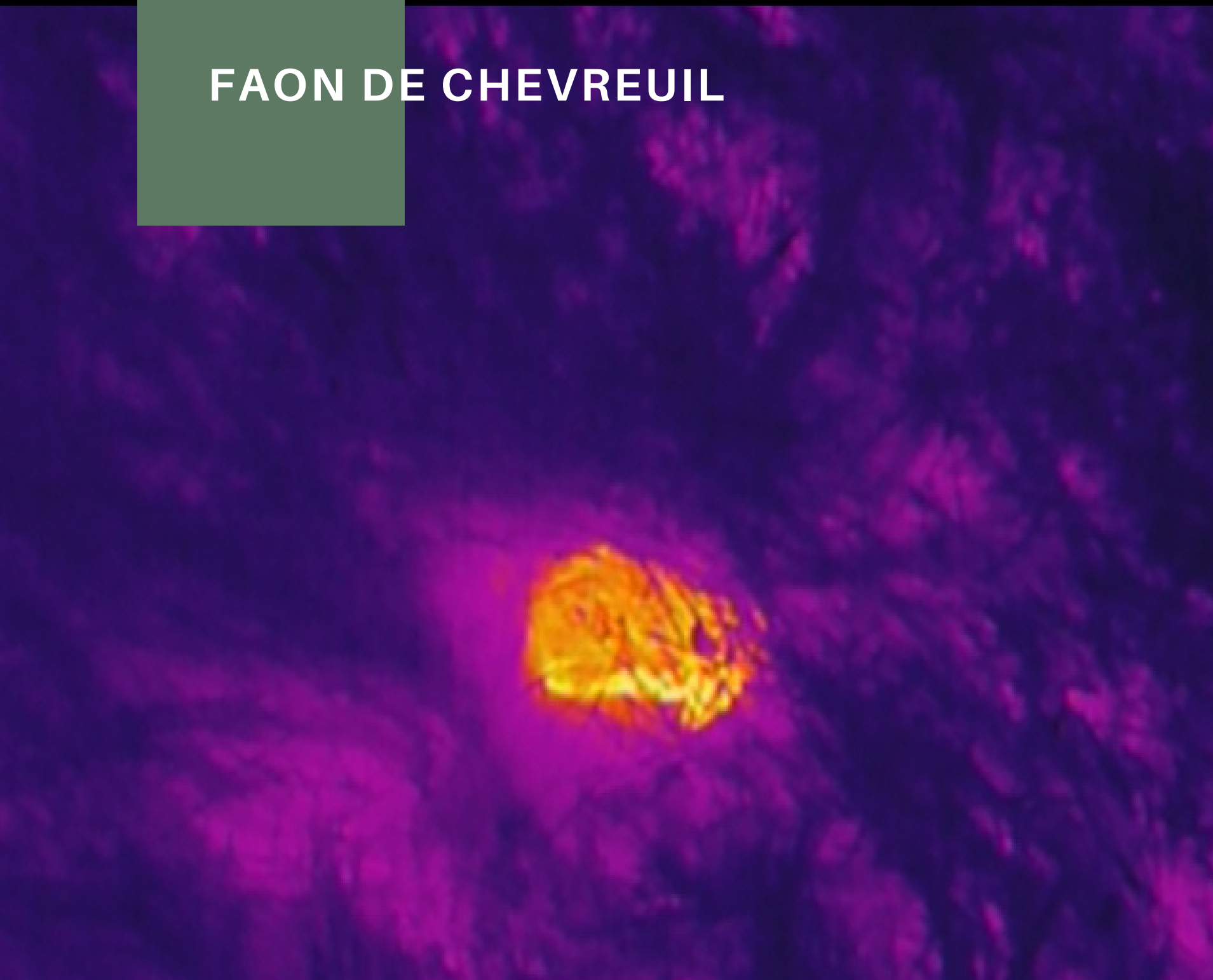
Intervention de sauvetage
de la faune sauvage

An aerial bathymetric map of a river channel. The map uses a color scale from blue (shallow) to red (deep). A red rectangular highlight is positioned in the upper left quadrant of the image. The river channel is visible as a winding path through the landscape.

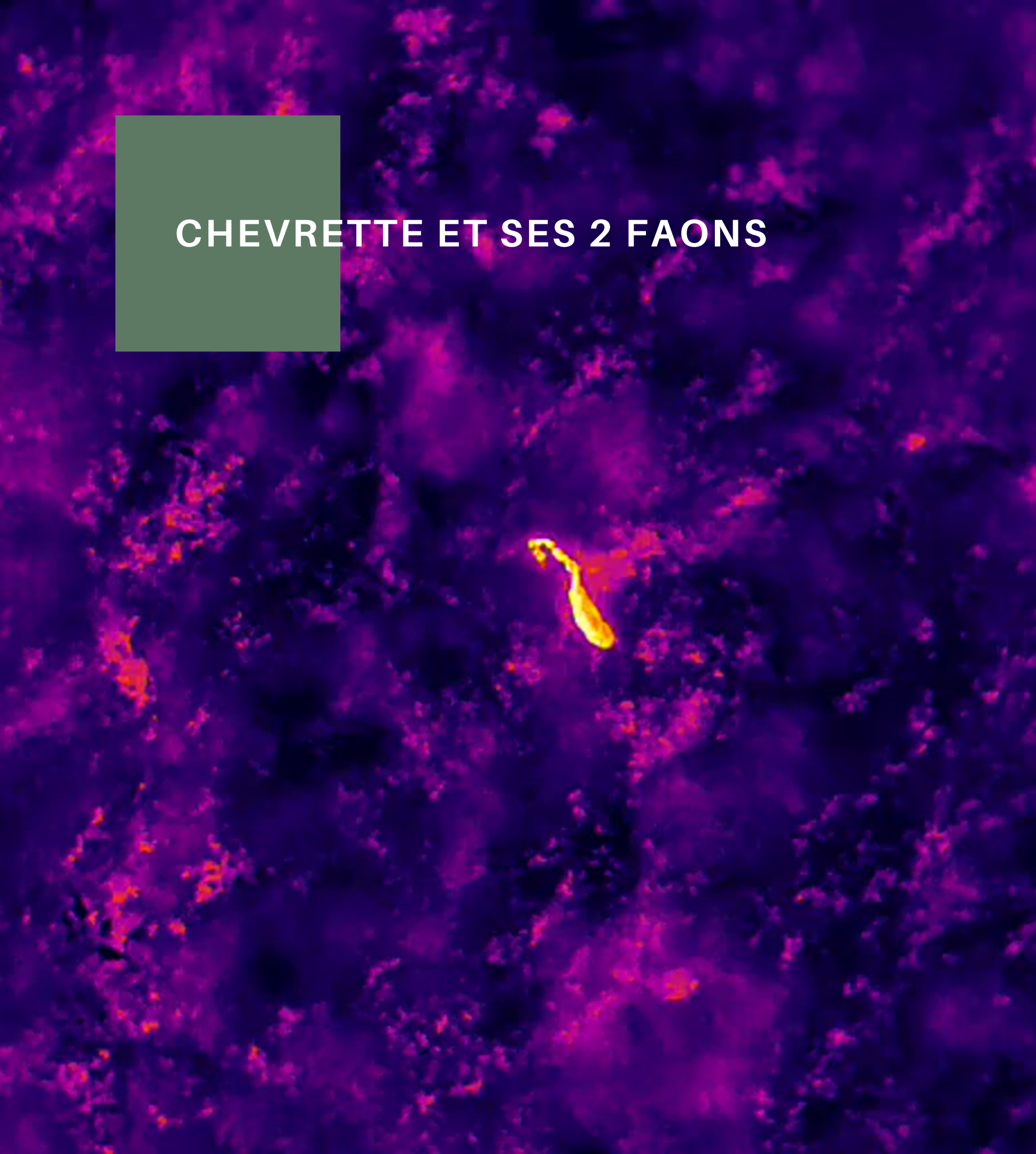
LOCALISATION DU FAON

ALTITUDE : 50 M, VITESSE DE PROSPECTION : 4 M/S

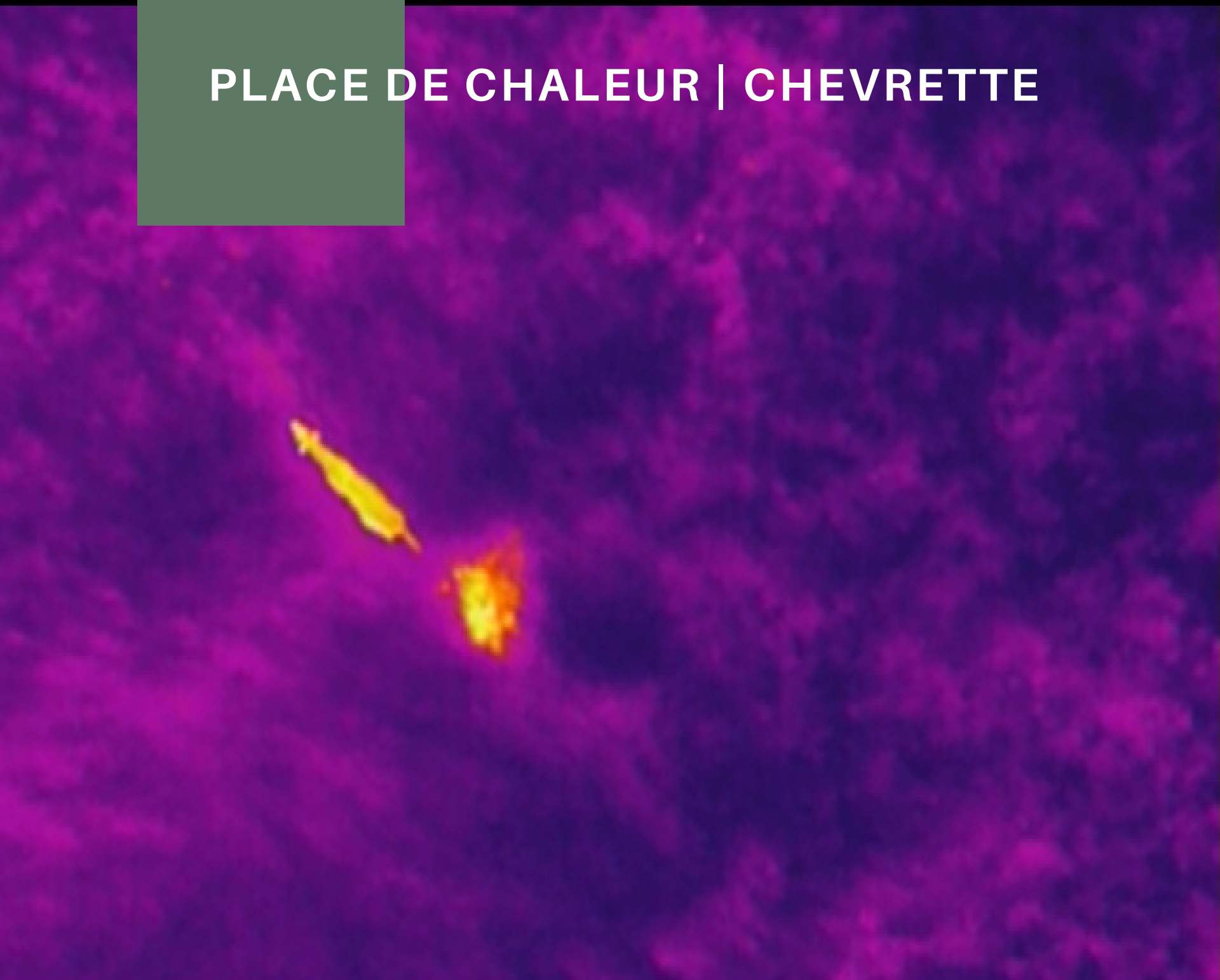
FAON DE CHEVREUIL



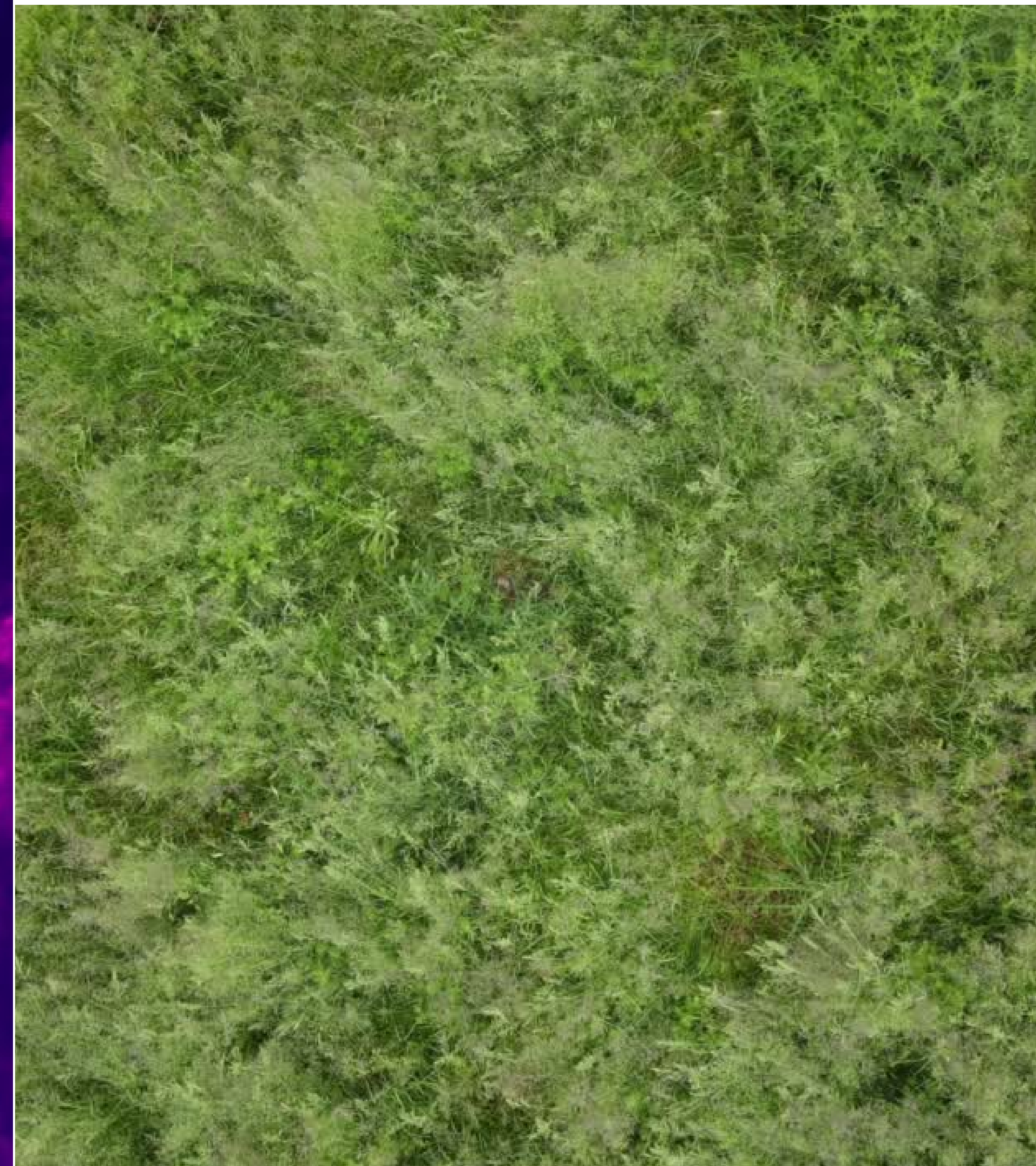
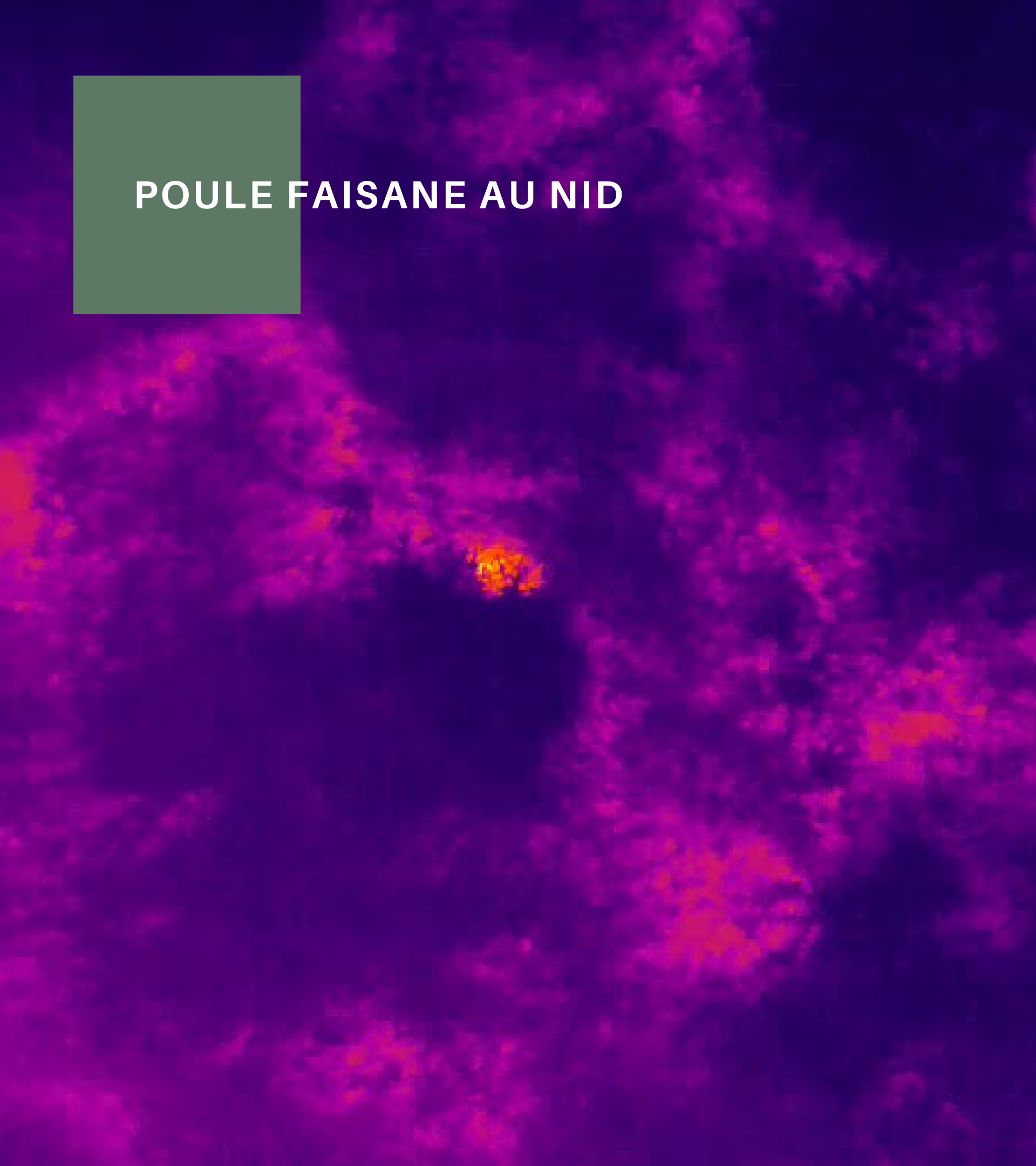
CHEVRETTE ET SES 2 FAONS

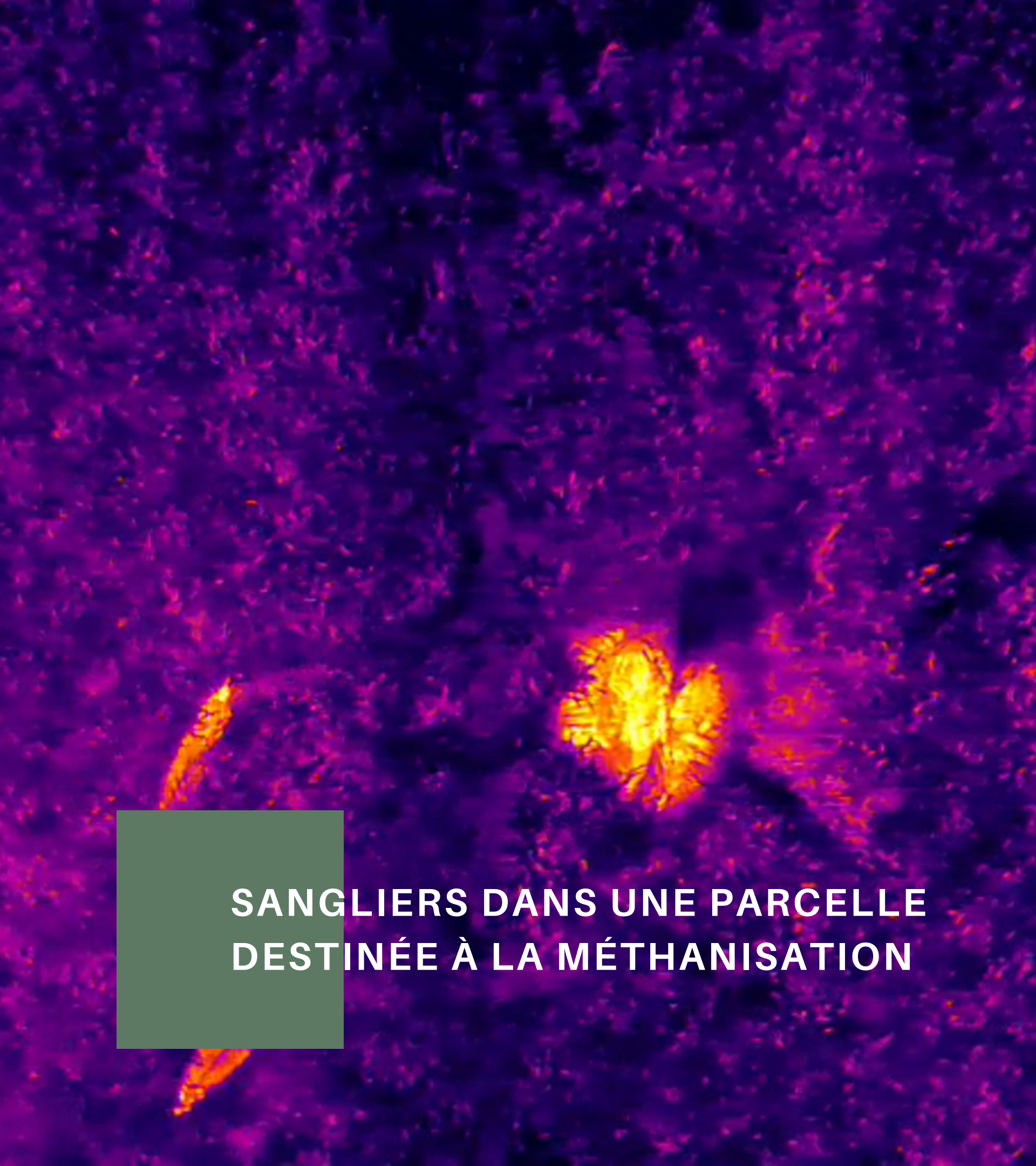


PLACE DE CHALEUR | CHEVRETTE



POULE FAISANE AU NID





**SANGLIERS DANS UNE PARCELLE
DESTINÉE À LA MÉTHANISATION**



